

BRISTAN

Regency Bath Shower Mixer

Fitting Instructions & Contents List



Please keep these instructions for future reference and request of replacement parts

Contents	Page
1. Introduction	03
2. Safety Note	03
3. Specification	04
4. Installation	04 - 05
5. Cleaning & Maintenance	06
6. Bristan Guarantee	07

1. Introduction

Thank you for choosing Bristan, the UK's leading taps and showers expert. We have designed this product with your enjoyment in mind. To ensure that it works to its full potential, it needs to be fitted correctly. These fitting instructions have been created to give you all of the information you need and, if you need any further help, please do not hesitate to give us a call on 0844 701 6273.

2. Safety Note

Please read these instruction thoroughly and retain for future use.

All product manufactured and supplied by Bristan are safe provided they are installed correctly, used correctly and receive regular maintenance in accordance with these instructions.

These fittings need to be installed in accordance with and meet the requirements of the Water Supply (Water Fittings) Regulations 1999 and Scottish Byelaws 2004.



Before starting any installation please consider the following:

Prior to drilling into walls, check that there are no hidden electrical wires, cables or water supply pipes. This can be checked with the aid of an electronic detector.

If power tools are used do not forget to:

- Wear eye protection
- Unplug equipment after use

3. Specification

Operating pressure range (bar)	Min.	Max.
Bath shower mixer	0.2	8.0
Maximum operating pressure – 10.0 bar		

NOTE:- Nominally equal (balanced) inlet supply pressures are recommended for optimum performance.

Designed to comply with BS EN 200 for single taps/ combination taps for water systems of type 1 and 2 general technical specifications and to be used within systems designed to BS 6700.

BS 6700 recommends the temperature of stored water should never exceed 65°C. A stored water temperature of 60°C is considered sufficient to meet all nominal requirements and will minimise the build up of lime scale in hard water areas.

4. Installation

This mixer is suitable for use at all supply pressures, however for optimum performance use both hot and cold water supplies which should be reasonably balanced.

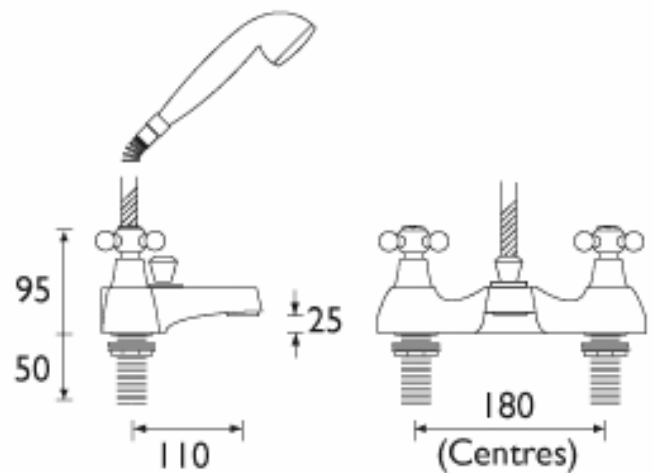
Operating pressures: Min 0.2 bar, Max 8.0 bar

If the fitting is installed at low pressure (tank fed), then the minimum distance from the underside of the nozzle to the cold water tank should be at least 2 metres to ensure adequate shower performance.

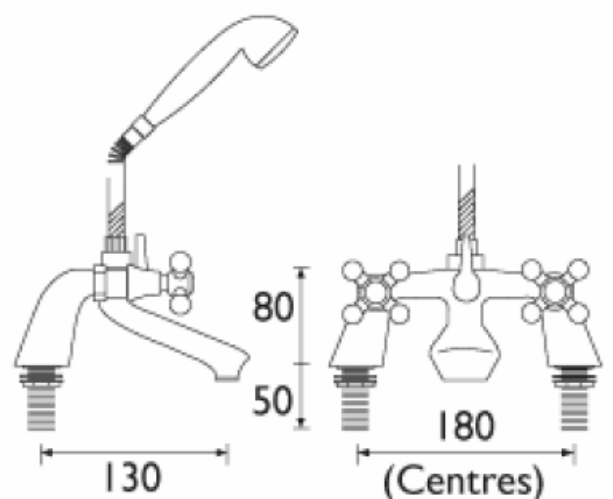
This mixer should be installed in compliance with Water Regulations.

Where the supplies are balanced i. e. hot water from the cylinder tank and cold from the mains, approved check valves must be fitted in the supply pipes.

For further details please contact your local Water Authority.



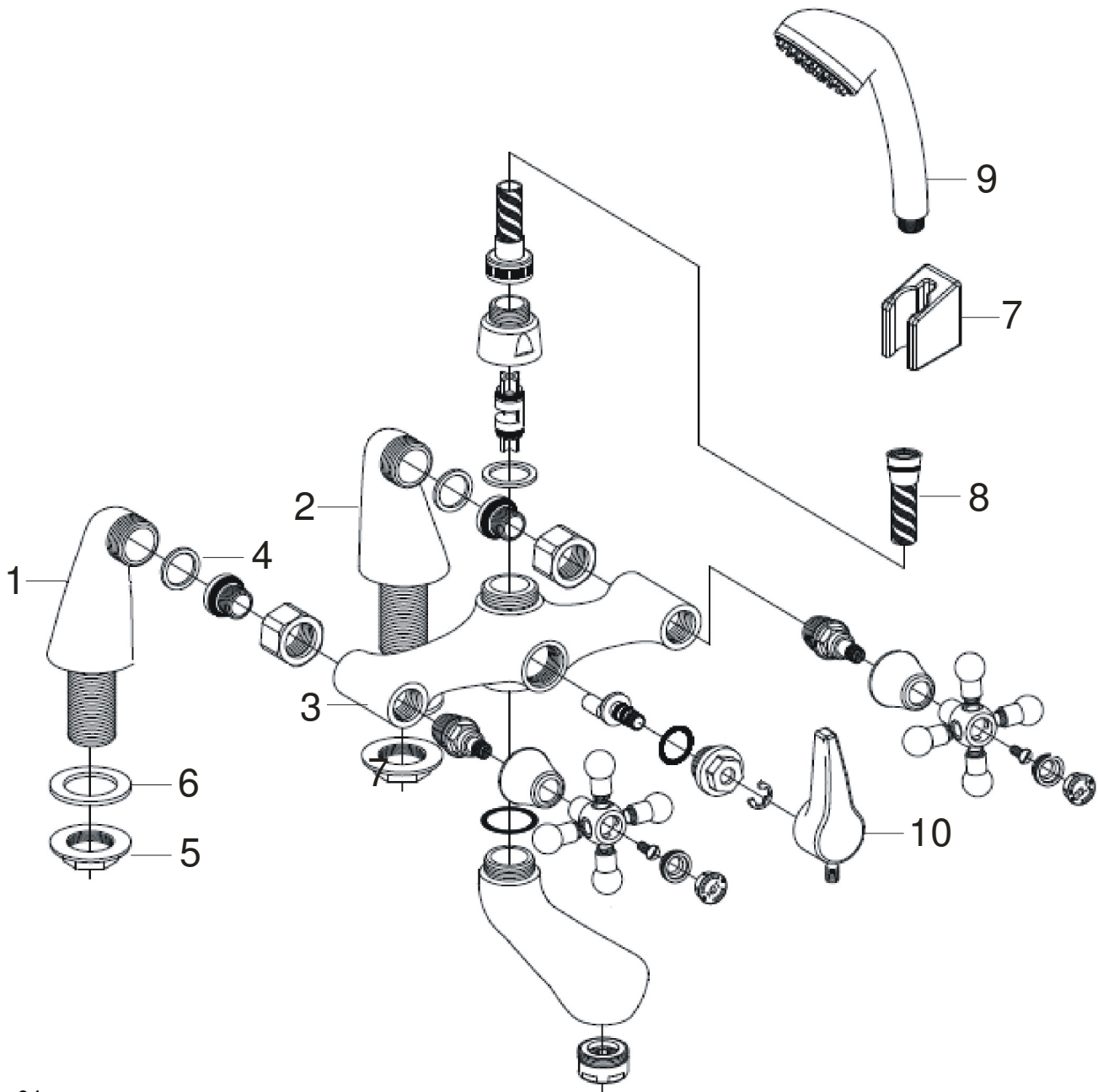
1500mm HOSE, HANDSET & WALL BRACKET



1500mm HOSE, HANDSET & WALL BRACKET

Installation continued

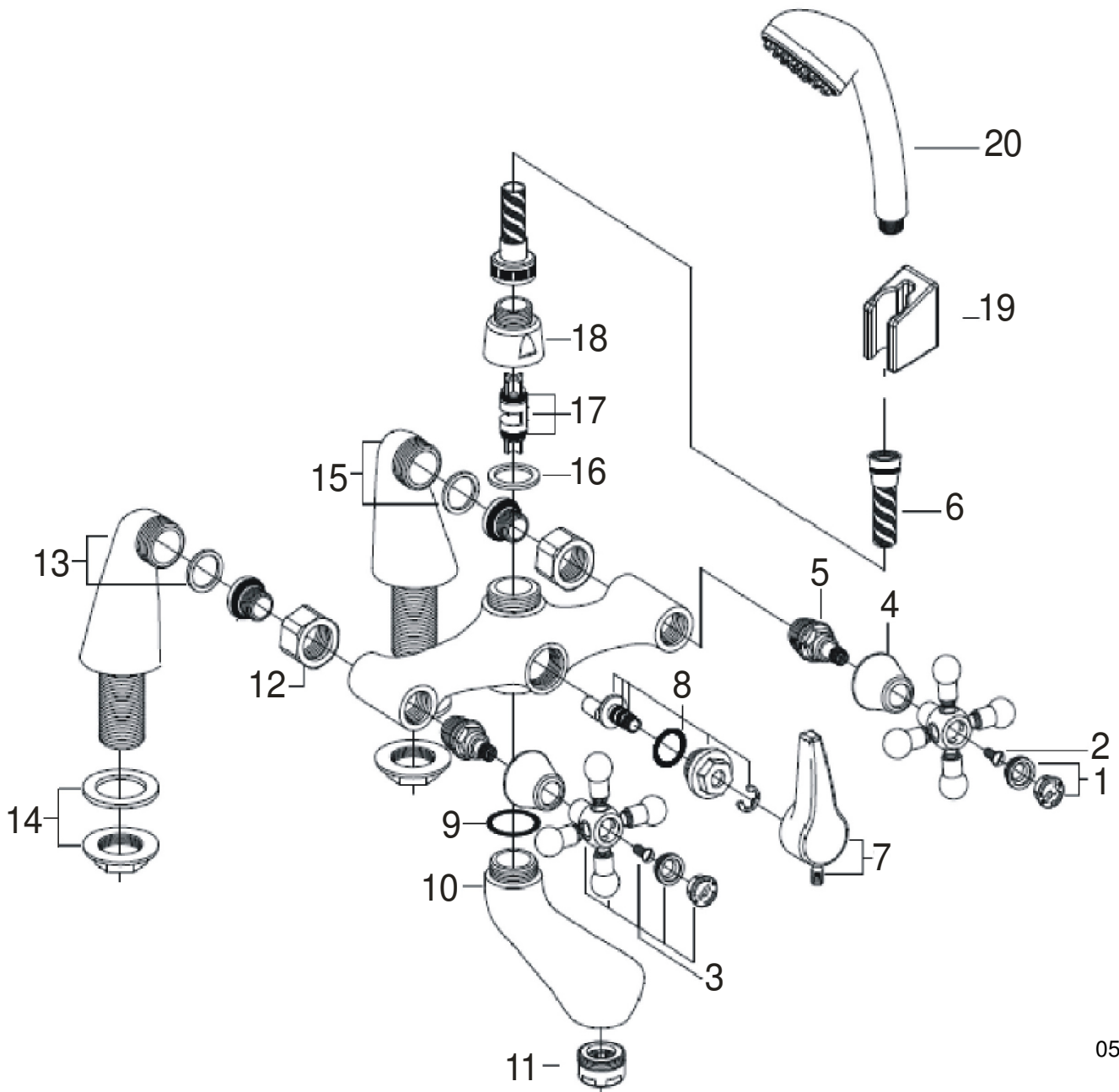
1. Identify all components are present prior to installation.
2. Fit the legs (1 and 2) to the body (3) using the large sealing washers (4).
3. Fit the mixer to the bath using the backnuts (5) and washers (6) and connect the hot and cold water supplies.
4. Fit the wall bracket (7) to the wall using the fixing kit provided.
5. Fit the hose (8) to the wall bracket (7) and the handset (9).
6. Fully open both valves, letting the water run for a few minutes to flush the system and check for any leaks.
7. Operate the mixer in both bath fill and shower mode. To switch from bath filler to shower mode simply move the diverter lever (10) from one direction to the other.



Installation continued – Contents List

Contents list

1. Indices	x 2	11. Anti splash	x 1
2. Screw	x 2	12. Nut	x 2
3. Handle	x 2	13. Pillar leg (left) and washer	x 1
4. Shroud	x 2	14. Backnut	x 2
5. Valve	x 2	15. Pillar leg (right) and washer	x 1
6. Hose and washer	x 1	16. Filter washer	x 1
7. Diverter lever	x 1	17. Shuttle	x 1
8. Diverter mechanism	x 1	18. Outlet reducer	x 1
9. 'O' Ring	x 1	19. Wall bracket	x 1
10. Spout	x 1	20. handset	x 1



5. Cleaning & Maintenance

Your fitting has a high quality finish and should be treated with care to preserve the visible surfaces.

All finishes will wear if not cleaned correctly. The only safe way to clean your product is to wipe with a soft damp cloth. Stains can be removed using washing up liquid. All bathroom cleaning product (powders and liquids) will damage the surface of your fitting, even the non-scratch cleaners.

NOTE:- Never use abrasive detergents or disinfectants or those containing alcohol, hydrochloric or phosphoric acid.

We advise that your fitting is regularly serviced, particularly in hard water areas.

Maintenance

Traditional valve type:- if the fitting leaks from the spindle

1. Remove the fitting head and shroud (if necessary).
2. Tighten the gland nut as shown in the diagram.

Sureflow type valves:- if the fitting self-opens

1. Remove the fitting head.
2. Tighten the gland nut on top of the valve.

All valve types:- if the fitting begins to drip

1. Turn off both water supplies.
2. Remove fitting head and valve.
3. Carefully clean seating and rubber washer.
4. Replace the valve and head and then turn on the water supplies.
5. Contact our helpline if the problem persists.

Bristan recommend E-Cloth for cleaning all of our bathroom & kitchen products. Using just water, E-cloth gives a smear free, deep clean by breaking up and holding dirt, which normal cloths leave behind. Order through your Bristan stockist.

(ORDER CODE: ECLOTH)





Guarantee

Bristan Guarantee

2 year -

Pumps, Power Showers

2 year parts. 1 year labour (subject to registration).

Electric Showers/Instantaneous Water Heaters

2 year parts. 1 year labour (subject to registration).

5 year -

Taps and Mixers

5 year parts and 1 year labour (subject to proof of purchase).

Shower Valves

5 year parts. 5 year labour (subject to registration), else 1 year with proof of purchase.

Accessories

5 year parts only. Includes bathrooms accessories, shower accessories (e.g. hoses, handsets and poles), wastes, WC levers and light pulls.

10 year -

Shower enclosures, Shower Trays, Sanitary Ware & Furniture

10 year parts (subject to registration), else 2 years with proof of purchase. 1 year labour (subject to registration), else 1 year with proof of purchase.

This guarantee applies to products purchased within the United Kingdom or Republic of Ireland, but does not apply to products used commercially.

The guarantee is only available to original purchasers who have proof of purchase.

The installation must allow ready access to all products for the purpose of inspection, maintenance or replacement.

Any part found to be defective during the above guarantee period will be replaced without charge, providing that the product has been installed in accordance with the instructions, used as intended, and regularly serviced.

Servicing should be carried out at regular intervals of no more than 12 months and more frequently in hard water areas (heavy lime scale) areas.

In the unlikely event that any problems are encountered with the product's performance on installation, you must obtain guidance/authorisation from our Customer Service Department, and be able to supply proof and date of purchase, before any remedial action is taken.

The guarantee excludes general wear and tear and damage caused by accident, misuse or neglect, and does not cover the following:

Components that are subject to general wear and tear such as filters, seals, 'O' rings and washers etc.

- Damage caused by faulty installation
- Damage caused by lime scale or any waterborne debris
- Damage caused by inappropriate cleaning products (see user instructions)
- Damage caused by the use of non-Bristan parts
- The product being used for a purpose other than intended by the manufacturer.

In the interests of continuous product improvement Bristan reserves the right to alter specification as necessary.



BRISTAN

This booklet covers all product codes

R BSM C

R BSM G

R DBSM C

R DBSM G

Helpline

0844 701 6273

Bristan Group Limited

Birch Coppice Business Park, Dordon, Tamworth, Staffordshire B78 1SG

A Masco Company

Website: www.bristan.com

Telephone: 0844 7016 274 Facsimile: 0844 701 6275

Email: enquire@bristan.com