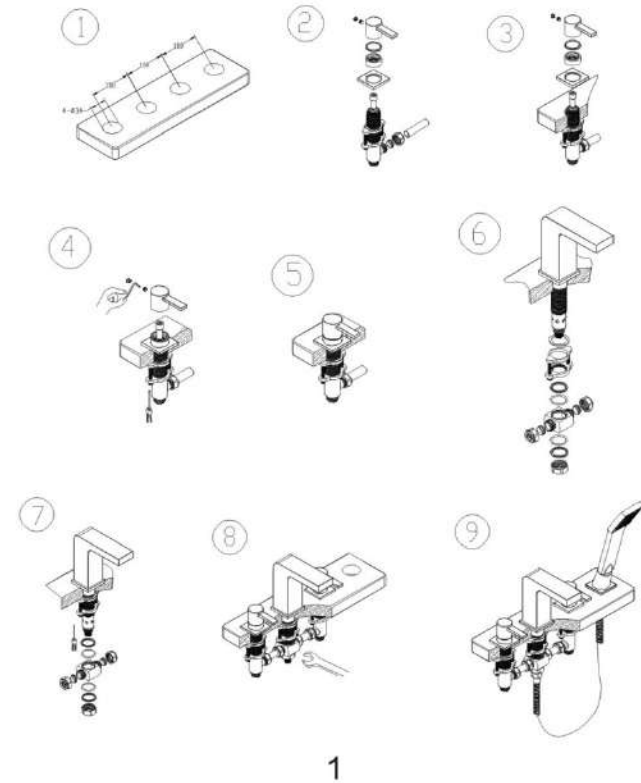


# Installation for 4-hole Deck Mounted Bath Shower Mixer

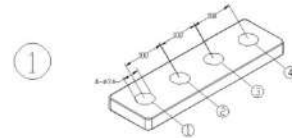
## Preview of Installation Procedures:



1

## Installation Procedures:

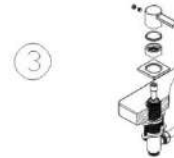
Step 1: Drill four holes on the bath as per the drawing shown below.



Step 2: Get all the components below ready for hole No. 1

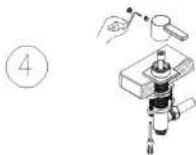


Step 3: Assemble all the components together as shown below:

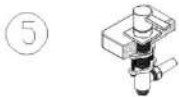


Step 4: Tighten the handle with allen key, tighten the mounting plate with screw driver.

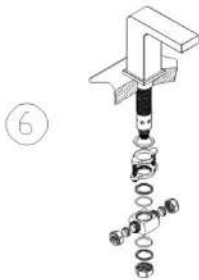
2



Step 5: Hole No.1 is installed as per the drawing below:

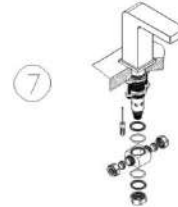


Step 6: Get all the components in place for hole NO. 2.

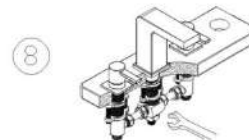


Step 7: Assemble all the components together and tighten the mounting plate with screw driver

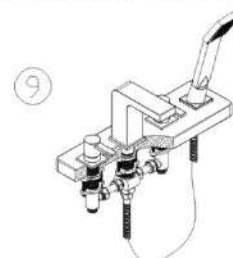
3



Step 8: Components for holes No. 3 should be installed as per hole No.1. Tighten all the nuts with spanner.



Step 9: Assemble all the components for hole NO. 4. Connect the hose between hole NO. 2 and No.4. This tap is installed now.



4